



# Albaraka Parkings & Gardens Waterproofing



## ABOUT THIS PROJECT:

**Market Segments:**  
General Construction  
Foundations

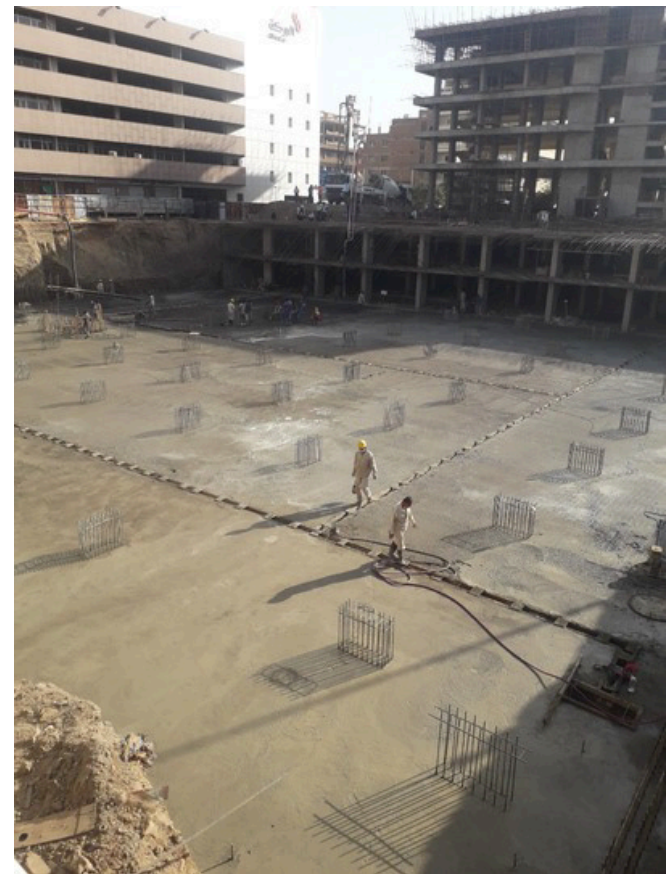
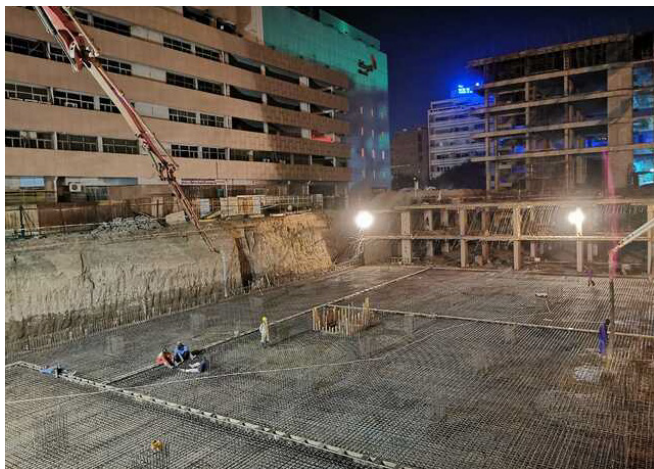
**Location:**  
Khartoum, Sudan

**Owners:**  
Albaraka Bank-Sudan

**Products Used:**  
Xypex Admix C-1000 NF

The Albaraka Bank Tower, owned by the prominent Albaraka Bank-Sudan, is situated near the Blue Nile River in Khartoum, Sudan. This project encountered a critical challenge with high groundwater pressure, posing a threat of water ingress to the underground parking and surrounding garden areas. To address this challenge and ensure a permanent and reliable waterproofing solution, engineers chose the unique Xypex Crystalline Technology.

This project portrays the successful implementation of Xypex Crystalline Technology in applications within the water table. By selecting Xypex Admix C-1000 NF, the engineers achieved exceptional waterproofing performance, contributing to the sustainability and durability of the concrete structures which enhances the overall value and longevity of the Albaraka Tower complex.



Xypex Admix C-1000 NF was incorporated into more than 2,500m<sup>3</sup> of concrete, eliminating the need for the application of waterproofing membranes or coatings after the concrete cures. The Xypex Admix C-Series reacts chemically with moisture, forming an insoluble crystalline material within the concrete microstructure. This crystalline material efficiently blocks concrete's capillaries and micro-cracks, rendering it impermeable to water and chemically resistant. This reaction continues over the life of the concrete resulting in the ability to self-heal new cracks. Consequently, the underground parking lot and garden areas of Albaraka Tower now benefit from comprehensive protection against water ingress, preserving the structural integrity and longevity of the concrete.