



Yodobashi Umeda Tower



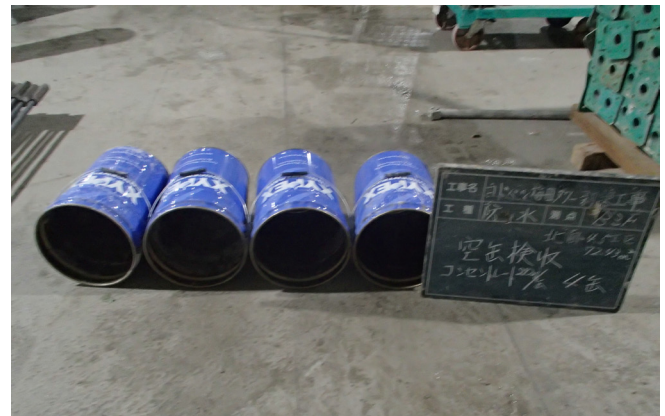
ABOUT THIS PROJECT:		
Market Segments: General Construction Foundations	Owner: Yodobashi Camera Company, Limited	Products Used: Xypex Concentrate Xypex Patch'n Plug
Location: Osaka, Japan	General Contractor: Penta-Ocean Construction Co., LTD.	

The Yodobashi Umeda Tower project in Osaka, Japan, is a significant investment in retail, entertainment, and urban development. It aims to create an engaging destination while boosting the economic and cultural vitality of Osaka's Umeda district. The tower stands 149.9 meters tall with 35 above-ground stories, housing commercial facilities on the lower levels and the Hanshin-Hankyu Hotel above. Additionally, it features four levels of underground parking.

The original construction plan called for drain pumps and double walls to waterproof the underground portion of the building. However, due to the high maintenance costs associated with this method, the contractor, Penta-Ocean Construction, decided to consider other solutions.

This application allowed the active Xypex chemicals to diffuse and integrate into the concrete foundation walls, forming a non-soluble crystalline structure. This rendered the concrete permanently waterproof and chemically resistant from within, while also providing the capacity to self-heal static cracks up to 0.5 mm.

To seal joints, the team used 1,632 kg of Xypex Patch'n Plug, a fast-setting hydraulic cement mix enhanced by the Xypex crystalline waterproofing technology. This ensured a reliable and permanent waterproofing and protection solution for the underground levels.



After thorough analysis, the project team chose Xypex products and the Sakizuke method for exterior waterproofing. This method involved installing a non-woven fabric mat on the outer walls and then spraying Xypex Concentrate directly onto it, using a total of 7,616 kg of the product.



Thanks to the project team's unwavering commitment to efficiency and their strategic choice for the unique Xypex Crystalline Technology, the construction of the new tower was completed in November 2019, several months ahead of the originally estimated schedule.

