

MDA Levis - Seniors' Residence Foundation Waterproofing



ABOUT THIS PROJECT:

Market Segment:
General Construction

General Contractor:
Pomerleau

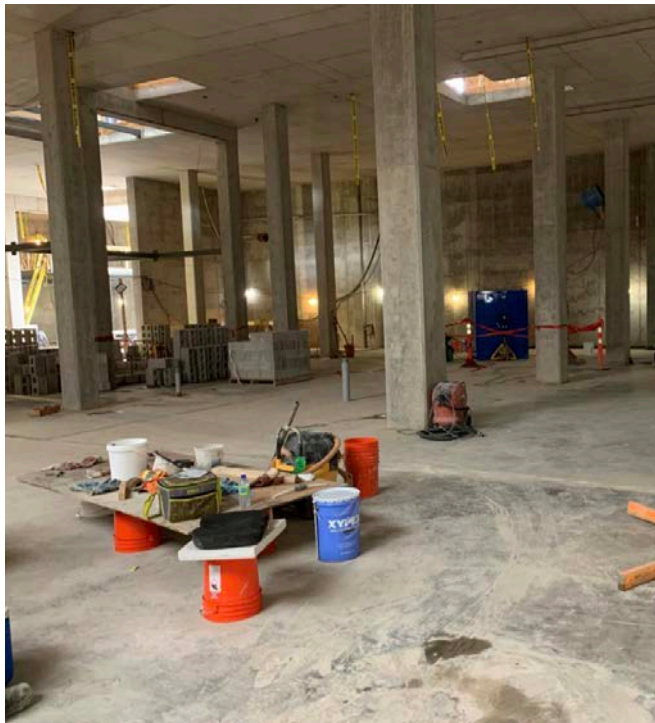
Products Used:
Xypex Patch'n Plug,
Xypex Concentrate,
Xypex Modified

Location:
St Etienne De Lauzon, QC

DESCRIPTION

In the strategic rejuvenation of the MDA Levis Seniors' Residence, the team faced a significant challenge: a compromised raft slab and basement walls due to the failure of an existing membrane waterproofing system.

Positioned 4 feet within the water table and enduring a constant hydrostatic pressure of 1.7 psi, the need for a definitive and enduring waterproofing solution was paramount.



THE XYPEX SOLUTION

The project embarked on a meticulous application of Xypex Patch'n Plug to immediately address active water ingress through 1,100 linear feet of cracks and construction joints. Subsequent to water stopping, the raft slab underwent a complete treatment with Xypex Concentrate.

This application aimed to create a durable protection against water penetration, a critical step given the slab's immersion in the water table and its susceptibility to leakage through any openings.



The basement walls received a specialized treatment combining Xypex Concentrate and Xypex Modified. This tailored approach not only enhanced the waterproofing integrity but also ensured the walls were primed for recoating with high-density acrylic paint, blending functionality with aesthetic appeal.

The project's execution phase coincided with unusually warm temperatures and high humidity, presenting an additional layer of complexity. Despite these challenging conditions, the effectiveness of Xypex's solutions was unequivocally demonstrated. A detailed examination of treated cracks revealed a crystalline bloom, a clear indicator of the products' action in sealing and waterproofing the concrete, much to the relief and satisfaction of all stakeholders involved.

The collaborative effort between MDA Levis, Pomerleau, and Xypex yielded a robust solution to address the waterproofing challenges facing the senior's residence.

Through meticulous planning, proactive testing, and the application of innovative products, the structure's integrity has been preserved, ensuring a secure and resilient environment for its occupants.

The Xypex crystalline system has revolutionized concrete waterproofing beyond traditional surface-level methods. Unlike barrier products like membranes and coatings that work at the concrete's surface, Xypex creates a crystalline structure deep within the concrete's pores and capillaries, effectively blocking water and chemicals. This system doesn't rely on surface adhesion, making it resistant to extreme hydrostatic pressure.

Xypex seals static hairline cracks up to 0.5 mm, overcoming the deterioration issues common with membranes, offering a permanent, self-healing solution that reactivates in the presence of water.

To learn more about how Xypex protects and waterproofs foundations, ensuring their longevity and resilience, [click here](#).

